

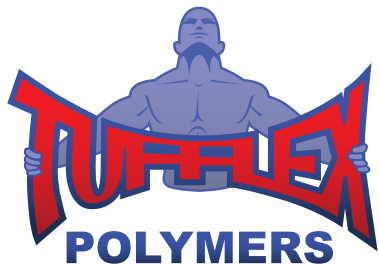
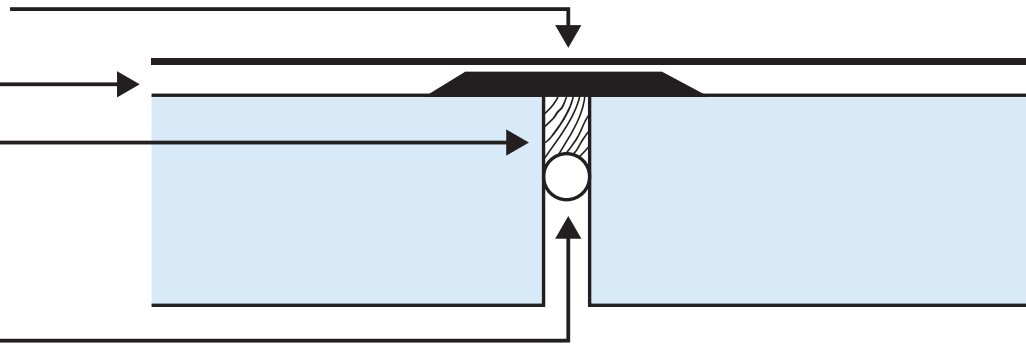
EXPANSION JOINT IN DECK SURFACE

TUFFLEX ELASTOMERIC COATINGS

TUFFLEX DETAIL COAT (30 mils)

POLYURETHANE SEALANT
JOINT SHALL BE AT A 2:1
WIDTH TO DEPTH RATIO
1/2 INCH MAX. DEPTH

CLOSED CELL ETHAFOAM



TUFFLEX POLYMERS

10880 Poplar Avenue, Fontana, CA 92337
Phone: (909) 349-2016 | (888) TUFFLEX
Fax: (909) 823-6309
www.tufflexpolymers.com

TUFFLEX Polymers provides this schematic detail as a recommended guide only. It does not provide a specific solution for all projects since conditions vary from one project to another.

EXPANSION JOINT IN DECK SURFACE